



The Coombe, Betchworth

£700,000





Combining a picturesque location with period charm and contemporary living space, this impressive Victorian home will appeal to families and professionals alike seeking style, practicality and an idyllic setting.





A delightful opportunity to acquire a semi-detached Victorian house, built in 1890. Spanning an impressive 1,051 square feet, this property boasts a wealth of character and period features that are sure to enchant any prospective buyer.

Upon entering, there is a spacious hallway, leading to two inviting reception rooms, perfect for both relaxation and entertaining. The living room is particularly noteworthy, featuring a stunning log burner that adds warmth and a touch of elegance to the space. The open-plan dining room seamlessly connects to the kitchen, creating a sociable atmosphere ideal for family gatherings or dinner parties.

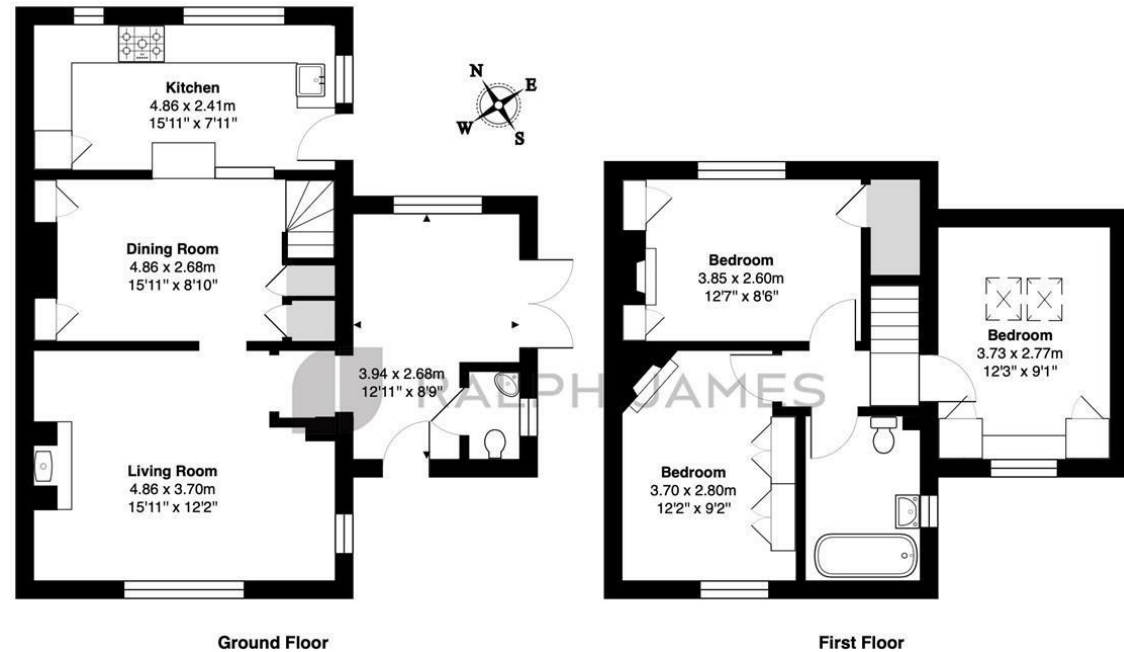
The property comprises three well-proportioned bedrooms, providing ample space for a growing family or guests. The bathroom is conveniently located, ensuring comfort and practicality for everyday living. A spacious, fully boarded loft offers excellent potential to be transformed into a bright and functional office.

One of the standout features of this home is the off-street parking, accommodating up to three cars, a rare find in such a picturesque setting. The property is also just a short walk from Betchworth station, making it an excellent choice for commuters seeking easy access to London and beyond.

With its charming façade and spacious interiors, this Victorian house is not only a wonderful family home but also a fantastic opportunity for those looking to settle in a tranquil yet well-connected location. Whether you are drawn to the area's natural beauty or its community spirit, this property is sure to impress.

Need to know

- 3 spacious bedrooms
- Victorian charm, built 1890
- Semi-detached cottage
- Excellent condition throughout
- 2 cosy reception rooms
- Large south-facing garden
- 3 off-street parking spaces
- Close to Betchworth station
- Scenic walks nearby
- Feature log burner in living room



Coombe Cottages, The Coombe, Betchworth

Total Area: 97.7 m² ... 1051 ft²

FOR ILLUSTRATIVE PURPOSES ONLY.

Whilst every attempt has been made to ensure the accuracy of the floor plan shown, all measurements, positioning, fixtures, features, fittings and any other data shown are an approximate interpretation for illustrative purposes only and are not to scale.

No responsibility is taken for any error, omission, miss-statement or use of data shown.

The above statement applies to both 'Still Moving London LTD' and the Company or individual displaying this floor plan.

Unauthorised reproduction prohibited.

Â© Still Moving London LTD (www.stillmoving.london)



Interested?

dorking@ralphjames.co.uk
01306 284555

#

ralphjames.co.uk